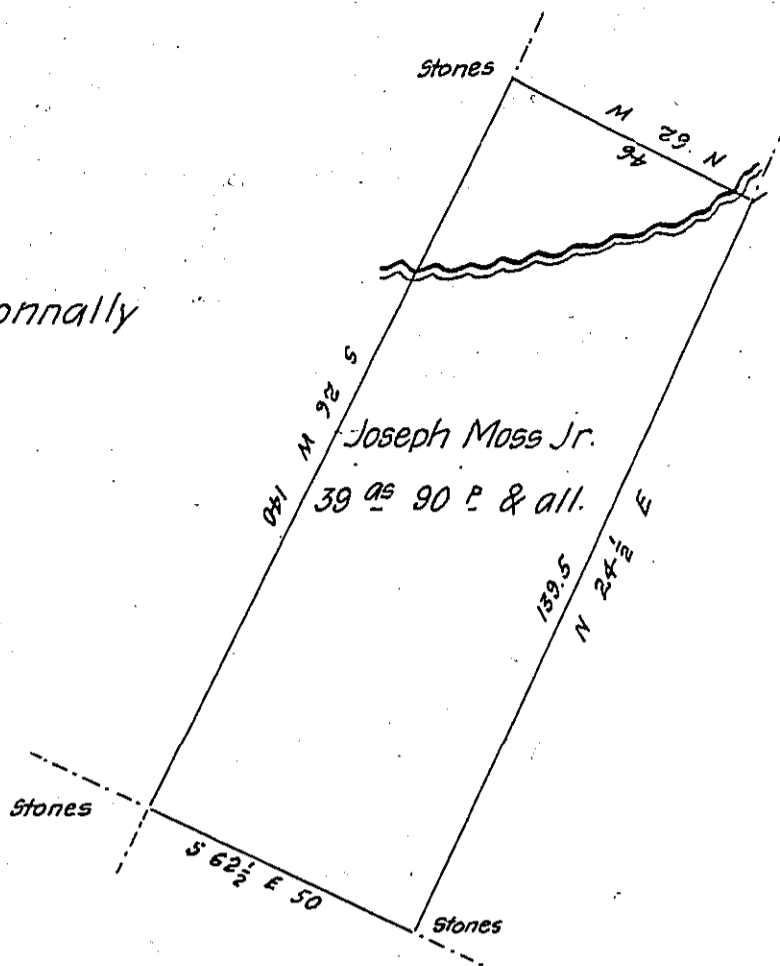


Vacant

William Connally



James Murray

Manuel Turner

Draft of a tract of unimproved land situate in the town-
 ship of Union Luzerne County adjoining lands of Manuel Turner
 and others containing thirty nine acres & ninety perches of land
 besides the usual allowance of Six Pr. Ct. for roads &c.

Surveyed the above described tract of land the thirty
 first day of March 1838 for Joseph Moss Jr by virtue of his warrant
 dated the fifth day of February 1838.

Zebulon H. Stevens

To John Taylor Esq^r

D.S.

Surveyor General

IN TESTIMONY that the above is a copy of the original remaining on file in
 the Department of Internal Affairs of Pennsylvania, made
 conformably to an Act of Assembly approved the 16th day of
 February, 1833, I have hereunto set my Hand and caused
 the Seal of said Department to be affixed at Harrisburg,
 this first day of March 1906

Loac R Brown
 Secretary of Internal Affairs.